

RESTRAINING DEVICES IN CHAIR

RESTRAINING AND SECURING IN CHAIR



Fire Retardant Treatment
EN 1021-2



WINN'SAVE® RESTRAINING DEVICES IN CHAIRS, SUBJECT TO MEDICAL PRESCRIPTION, HAVE BEEN SPECIALLY DESIGNED TO RESTRICT FREE MOVEMENT OF PATIENTS WITH ALTERED MENTAL FACULTIES TO PREVENT AND AVOID THE RISK OF FALLING, LIMIT PERIODS OF WANDERING OR ENABLE CARE.

EFFECTIVENESS

- ▶ progressive design depending on the desired level of protection.
- ▶ Reassuring fabric that is soft to the touch.
- ▶ Use facilitated by integrated marking.
- ▶ Reinforced seams subject to pulling.
- ▶ Durable materials (stainless steel buckles and eyelets).

SAFETY

- ▶ fabrics have undergone "Fire Retardant" treatment.
- ▶ Compatible with thermal and chemical disinfection.
- ▶ Two closing systems depending on need (Restraint - magnets or holding - buckle).

WAIST RESTRAINT AND PELVIC STRAP

- ▶ Indication: Postural instability and sliding forward.
- ▶ Properties: Keeping the patient sitting in an armchair or wheelchair.
- ▶ Recommended use: Measure the waist circumference and choose the dimension of the appropriate belt.
- ▶ Made of: polyester material. With undergone fire retardant treatment.
- ▶ Recommendation: the restraint must be subject to medical prescription and its benefits re-assessed every 24 hours.

CHEST HARNESS FOR RESTRAINING IN A CHAIR

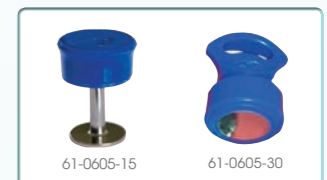
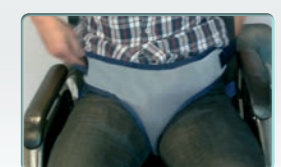
- ▶ Indication: Postural instability.
- ▶ Properties: Keeping the patient sitting in an armchair or wheelchair.
- ▶ Recommended use: Start by the front fastening point and then ensure rear fastening.
- ▶ Available in one size only
- ▶ Made of: polyester material. With undergone fire retardant treatment.
- ▶ Recommendation: the restraint must be subject to medical prescription and its benefits re-assessed every 24 hours.

JACKET WITH PELVIC STRAP

- ▶ Indication: Postural instability and sliding forward.
- ▶ Properties: Keeping the patient sitting in an armchair or wheelchair.
- ▶ Recommended use: Check that the person's morphology is appropriate for the characteristics of the jacket with pelvic strap
- ▶ Made of: polyester material. With undergone fire retardant treatment.
- ▶ Recommendation: the restraint must be subject to medical prescription and its benefits re-assessed every 24 hours.

SINGLE T-SHAPED WAIST STRAP

- ▶ Indication: Postural instability and sliding forward.
- ▶ Properties: Keeping the patient sitting in an armchair or wheelchair.
- ▶ Recommended use: Measure the semi-circumference of the waist (the side to side part).
- ▶ Made of: polyester material. With undergone fire retardant treatment.
- ▶ Recommendation: the restraint must be subject to medical prescription and its benefits re-assessed every 24 hours.



61-0605

REFERENCE	DESCRIPTION	MEASUREMENTS*	CLOSING SYSTEMS	
			MAGNET	SLIDING BUCKLE
VCBFT005-00	Optional: chest harness for restraint	One size (U)	-	-
VCBFT005-10	Waist and pelvic restraint - (S)	45 - 85 cm	x	
VCBFT005-20	Waist and pelvic restraint - (M)	70 - 118 cm	x	
VCBFT005-30	Waist and pelvic restraint - (L)	94 - 158 cm	x	
VCBTLF013-01	Accessory - Spare pelvic strap	-	-	-
VCNTFT008-10	Jacket with pelvic strap - (S)	50 - 80 cm		x
VCNTFT008-20	Jacket with pelvic strap - (M)	70 - 100 cm		x
VCNTFT008-30	Jacket with pelvic strap - (L)	90 - 130 cm		x
VCNTFT012-10	T-shaped waist strap - (S)	50 - 80 cm		x
VCNTFT012-20	T-shaped waist strap - (M)	70 - 100 cm		x
VCNTFT012-30	T-shaped waist strap - (L)	90 - 130 cm		x

Warranty: 1 year.

Maintenance:

Photos not contractually binding

FP0000048 / 03.2018



WINNCARE Group - 4, Le Pas du Château - 85670 Saint-Paul-Mont-Penit - France
Tél : +33 (0)2 51 98 55 64 - Fax : +33 (0)2 51 98 59 07 - E-mail : info@medicatlantique.fr - www.winnicare.fr
In the interest of constantly improving its products, the WINNCARE Group reserves the rights to modify the technical specifications of any product without prior notice
Class I medical device in accordance with European Directive 93/42/EEC

